



# DSW

SOLUTIONS

MULTI-BRAND  
**MODERNISATION SOLUTIONS**

[www.dsw-solutions.com](http://www.dsw-solutions.com)

PAGE

03

## **BUILDING SUCCESS, STEP BY STEP**

Multi-brand Approach for  
Efficient Processes



PAGE

06

## **TAILORED SOLUTIONS FOR EVERY NEED**

Our Controllers are Available in  
Numerous Formats



PAGE

07

## **BESPOKE MOTOR DESIGN**

DSW Solutions Offers  
a Bespoke Motor  
Design Service



PAGE

08

## **CASE STUDIES**

Schindler Smart  
Before & After



PAGE

09

## **OTHER CASE STUDIES**

Before & After





## Modernisation Solutions and Product Offering

- **Back-to-guide** solutions.
- **Doors & Modernisation operators:** Wittur, Fermator, Sematic, Meiller, Langer & Laumann, Prisma.
- **Machines:** Ziehl – Abegg, Liftequip, Sassi, Kron, Cegi & Montanari.
- **Controllers:** Arkel (stock), Newlift, Edel.
- **Traction ropes:** Pfeifer Drako.
- **Hydraulics:** Bucher, Hydroware, Algi, GMV & Omar.
- **Autodiallers & Safety Edge's:** Avire Panachrome+, Memcom, Safeline.
- **Spare parts:** Multibrand, Otis, Kone, Schindler, TKE, Orona...
- **Electronic components:** ARD's, soft starters, safety edges: SMS.



## Energy Saving & Power Solutions

- **Pure Momentum.**
- **IoT energy monitoring.**
- **RegenMaster.**
- **Evacuation / Firefighting power supplies.**



## Cost Savings / Improved Competitiveness

- **Shaft access platforms.**
- **Mobile gantry hoists.**
- **Solutions for escalators.**
- **Magic mirrors.**



# Building Success, Step by Step

## How We Can Assist:

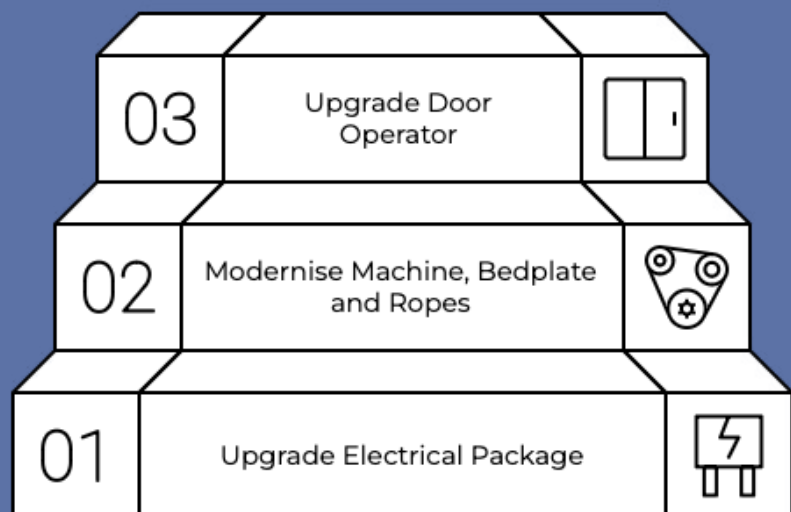
- ✓ Pre-engineered solutions.
- ✓ Complete new electrical package.
- ✓ Optional mechanical package.
- ✓ Added flexibility for your modernisation solutions.
- ✓ Tried and tested solutions.

## Advantages:

-  Multi-brand approach.
-  Open protocol.
-  Improve safety, performance and overall comfort.
-  Improved energy consumption.
-  DSW Solutions: Single supply source.

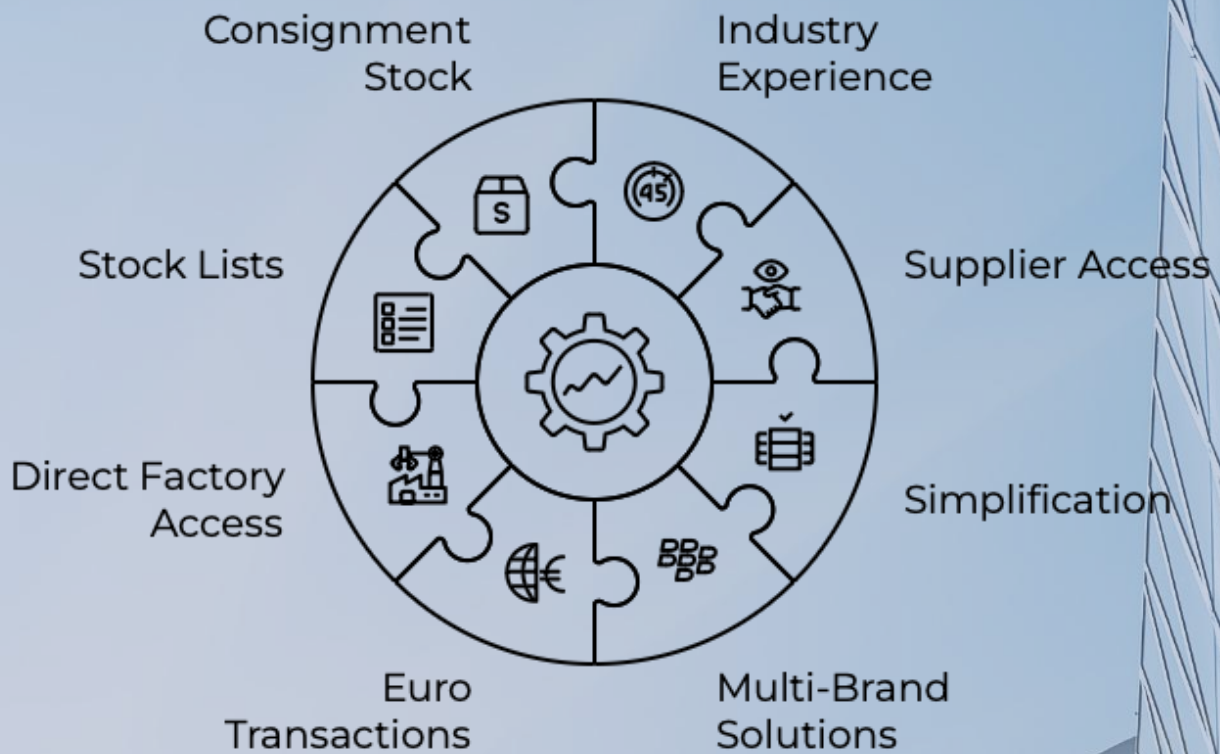
DSW  
SOLUTIONS

**A Tailored  
Solution for  
Every Need**



# DSW Added Value

## All Your Solutions in One Place



# Tailored Solutions for Every Need

**Our controllers are available in numerous formats:**

- **Slim upright on the landings. Ideal for Kone Monospace and Otis Gen2.**
- **Recessed into the wall. Perfect for Schindler Smart.**
- **Standard MRL format on landing. The best solution for many multi-brand MRL solutions.**
- **Machine room. Wall mounted or supplied on a plinth.**

---

## **SCHINDLER:**

Eurolift  
3300  
5400  
Smart

---

## **OTIS:**

GEN2  
GEN2 R1

---

## **ORONA:**

Arca 1  
Arca 2  
Arca 3

---

## **THYSSEN:**

Symphonie  
Synergie  
Rapsody  
Galaxy  
Univers  
Isis

---

## **KONE:**

Monospace  
Maxispace

---

## **OTHERS:**

IMEM  
Omega  
Mac Puarsa (MP)  
Daldoss



# Bespoke Motor Design

Did you know?  
DSW Solutions offers a bespoke motor design service.

## Example Solutions

**KONE MONOSPACE**

**OTIS GEN2**

**SCHINDLER EUROLIFT**

**SCHINDLER 3100 / 3300 / 3500**

**SCHINDLER 3400 / 5400**

**ORONA ARCA M33 / M34**

**ORONA O-140**

**SASSI LEO**

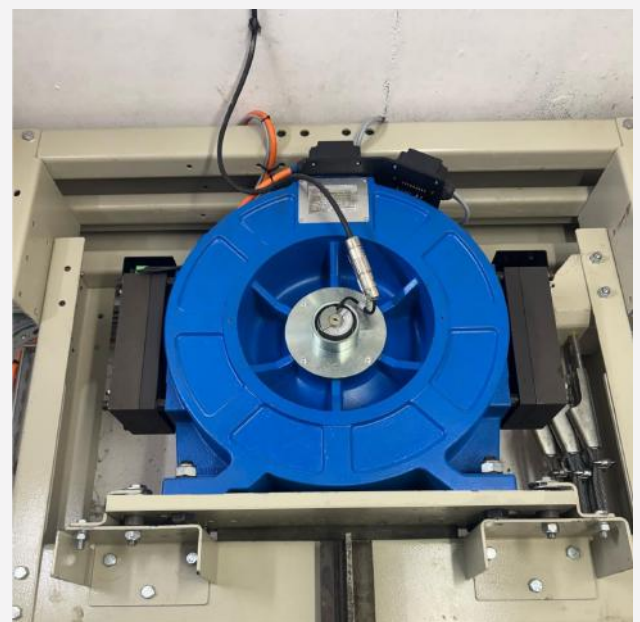
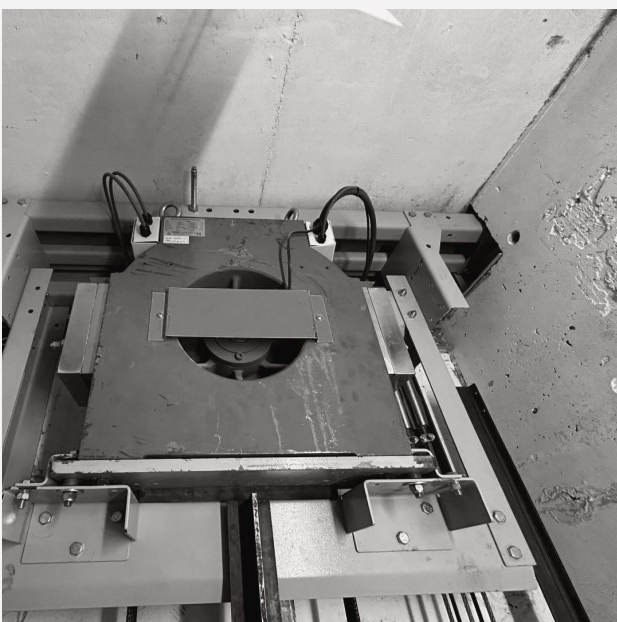
**ZIEHL-ABEGG**

**AUFZUGTEILE 1-25/RR/1200/G150**

**DRUM DRIVES**

**CUSTOM DESIGN SERVICE**

## Modernisations made easy





# Bottom Drive Modernisation

Controller and Machine replacement.

Project summary:



300kg.



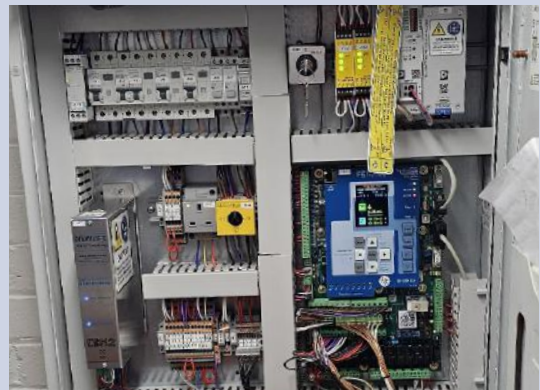
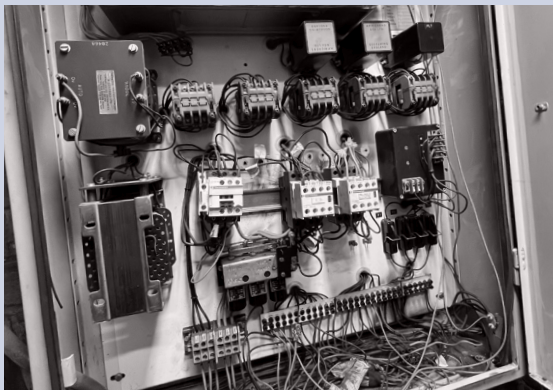
5 Floors.



New geared machine  
with UCM



Improved safety





## Other Case Studies

### Before and After



630kg.



7 Floors.

Kone Monospace modernisation including RegenMaster regenerative drive. AMD door operator and controller included.



### Before and After

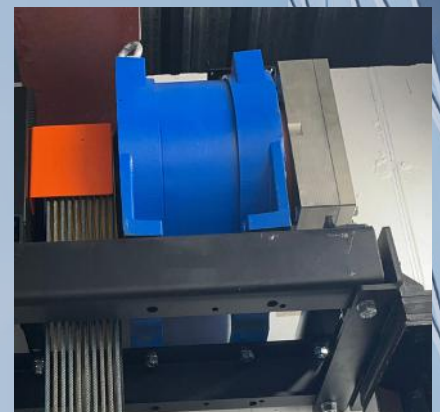


1275kg.



2 Floors.

Aufzugsteile BT MRL modernisation for Irish Rail. Fermator Premium doors and Cobianchi safety gear also included.



### Before and After

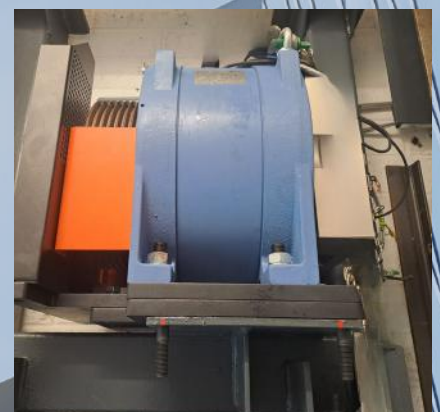
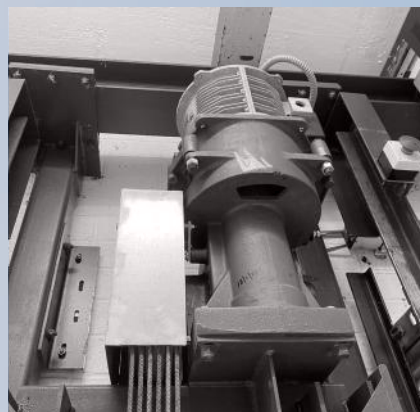


630kg.



2 Floors.

ORONA O-140 MRL modernisation for Irish Rail. Wittur Pegasus Supra doors and Pfeifer Drako ropes also included.



# Major Modernisation

## Before and After



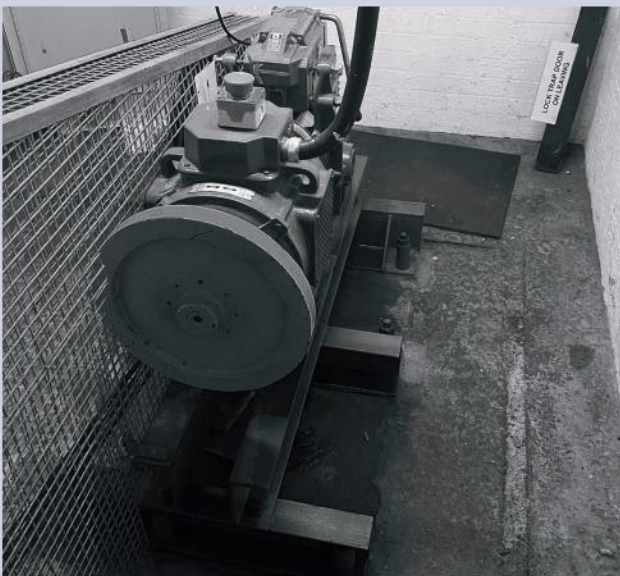
300kg.



5 Floors.



Major modernisation of 6 x bottom drive traction lifts with IoT remote monitoring. DSW Solutions was instructed to supply doors, machines, bedplates, controllers, safety gears, autodiallers, overspeed governors, door locks and ropes.





# Major Modernisation

## Schindler Smart

**ARKEL**

630kg.



6 Floors.

DSW Solutions provided a new VF door operator, gearless machine with UCM compliance, bedplate adaption, Arkel Controller IoT remote monitoring, landing door overhaul kit, overspeed governor and ropes.





# DSW

SOLUTIONS

UPLIFTING ELEVATOR  
BUSINESSES GLOBALLY

ENERGY SAVING DEVICES  
ADVANCED UPS SYSTEMS  
EVACUATION/FIREFIGHTING POWER SUPPLIES  
ENERGY MONITORING DEVICES  
REMOTE MONITORING  
DOOR MODERNISATIONS  
COMPLETE ENTRANCES  
GEARED & GEARLESS MACHINES  
CONTROLLER UPGRADES  
SPARE PARTS  
MAGIC MIRRORS  
ACCESS SOLUTIONS  
BACK TO GUIDE MODERNISATIONS

[WWW.DSW-SOLUTIONS.COM](http://WWW.DSW-SOLUTIONS.COM)