



DSW

SOLUTIONS

MULTI-BRAND
MODERNISATION SOLUTIONS

www.dsw-solutions.com

PAGE

03

BUILDING SUCCESS, STEP BY STEP

Multi-brand Approach for
Efficient Processes



PAGE

06

TAILORED SOLUTIONS FOR EVERY NEED

Our Controllers are Available in
Numerous Formats



PAGE

07

BESPOKE MOTOR DESIGN

DSW Solutions Offers
a Bespoke Motor
Design Service



PAGE

08

CASE STUDIES

Schindler Smart
Before & After



PAGE

09

OTHER CASE STUDIES

Before & After





Modernisation Solutions and Product Offering

- **Back-to-guide** solutions.
- **Doors & Modernisation operators:** Wittur, Fermator, Sematic, Meiller, Langer & Laumann, Prisma.
- **Machines:** Ziehl – Abegg, Liftequip, Sassi, Kron, Cegi & Montanari.
- **Controllers:** Arkel (stock), Newlift, Edel.
- **Traction ropes:** Pfeifer Drako.
- **Hydraulics:** Bucher, Hydroware, Algi, GMV & Omar.
- **Autodiallers & Safety Edge's:** Avire Panachrome+, Memcom, Safeline.
- **Spare parts:** Multibrand, Otis, Kone, Schindler, TKE, Orona...
- **Electronic components:** ARD's, soft starters, safety edges: SMS.



Energy Saving & Power Solutions

- **Pure Momentum.**
- **IoT energy monitoring.**
- **RegenMaster.**
- **Evacuation / Firefighting power supplies.**



Cost Savings / Improved Competitiveness

- **Shaft access platforms.**
- **Mobile gantry hoists.**
- **Solutions for escalators.**
- **Magic mirrors.**

Building Success, Step by Step

How We Can Assist:

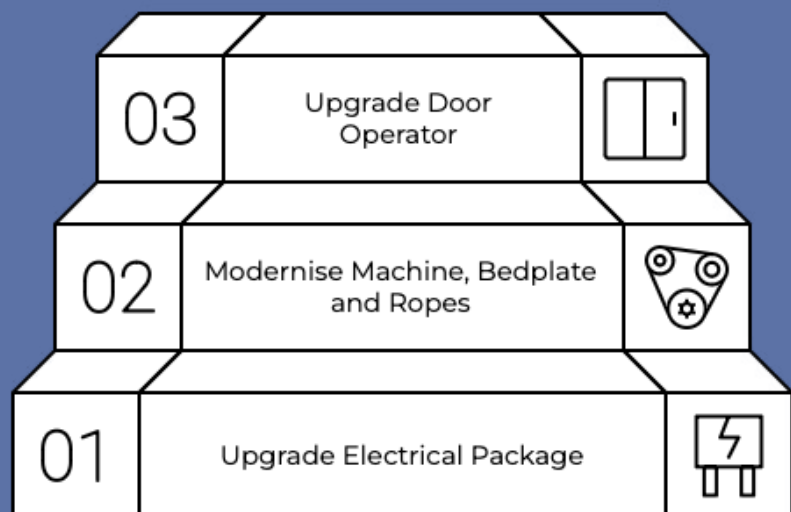
- ✓ Pre-engineered solutions.
- ✓ Complete new electrical package.
- ✓ Optional mechanical package.
- ✓ Added flexibility for your modernisation solutions.
- ✓ Tried and tested solutions.

Advantages:

-  Multi-brand approach.
-  Open protocol.
-  Improve safety, performance and overall comfort.
-  Improved energy consumption.
-  DSW Solutions: Single supply source.

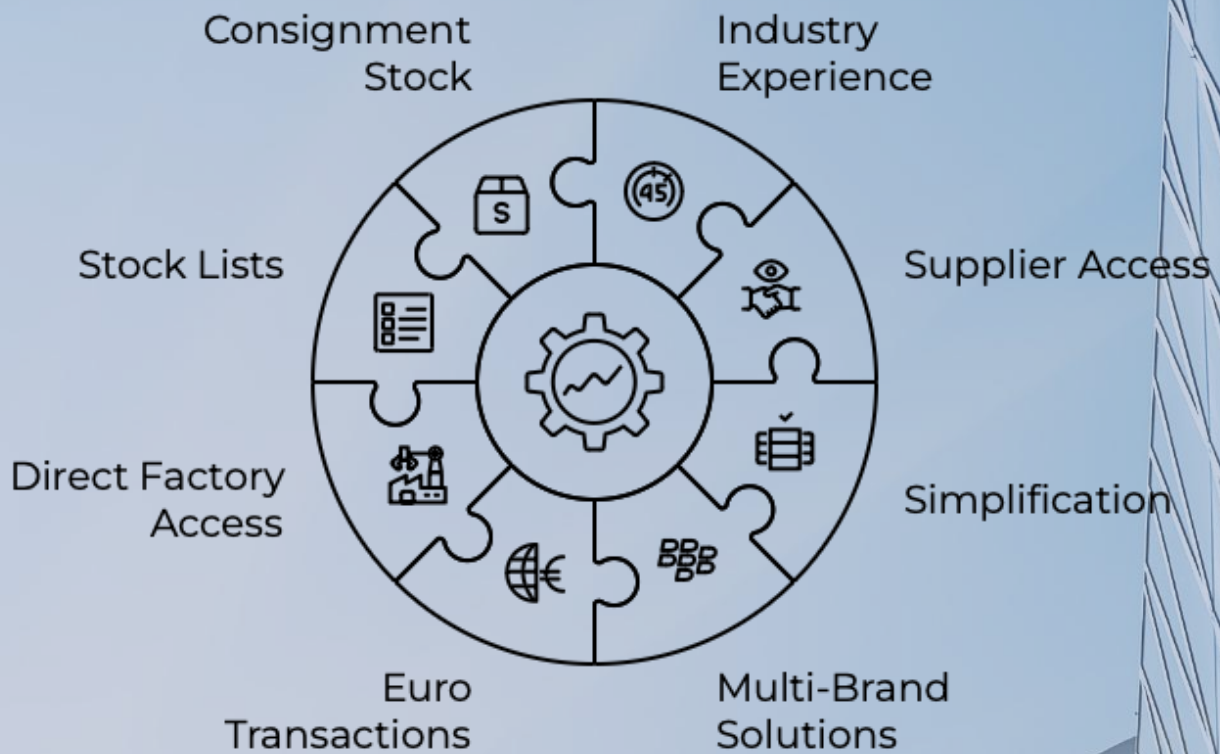
DSW
SOLUTIONS

**A Tailored
Solution for
Every Need**



DSW Added Value

All Your Solutions in One Place



Tailored Solutions for Every Need

Our controllers are available in numerous formats:

- **Slim upright on the landings. Ideal for Kone Monospace and Otis Gen2.**
- **Recessed into the wall. Perfect for Schindler Smart.**
- **Standard MRL format on landing. The best solution for many multi-brand MRL solutions.**
- **Machine room. Wall mounted or supplied on a plinth.**

SCHINDLER:

Eurolift
3300
5400
Smart

OTIS:

GEN2
GEN2 R1

ORONA:

Arca 1
Arca 2
Arca 3

THYSSEN:

Symphonie
Synergie
Rapsody
Galaxy
Univers
Isis

KONE:

Monospace
Maxispace

OTHERS:

IMEM
Omega
Mac Puarsa (MP)
Daldoss



Bespoke Motor Design

Did you know?
DSW Solutions offers a bespoke motor design service.

Example Solutions

KONE MONOSPACE

OTIS GEN2

SCHINDLER EUROLIFT

SCHINDLER 3100 / 3300 / 3500

SCHINDLER 3400 / 5400

ORONA ARCA M33 / M34

ORONA O-140

SASSI LEO

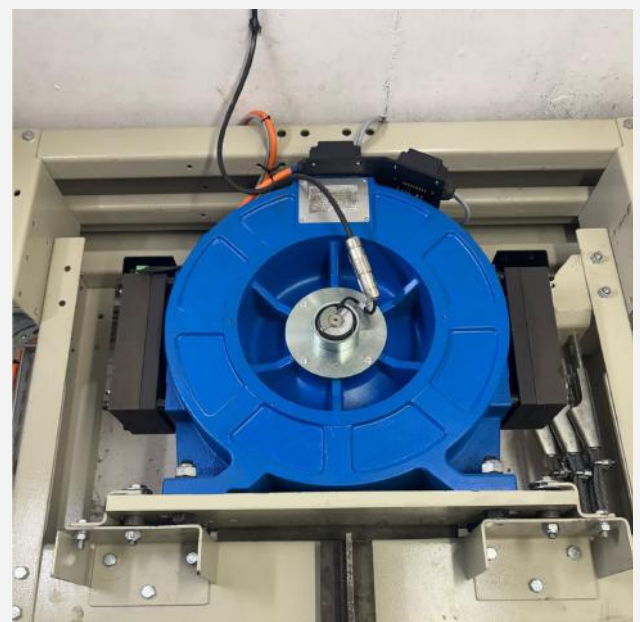
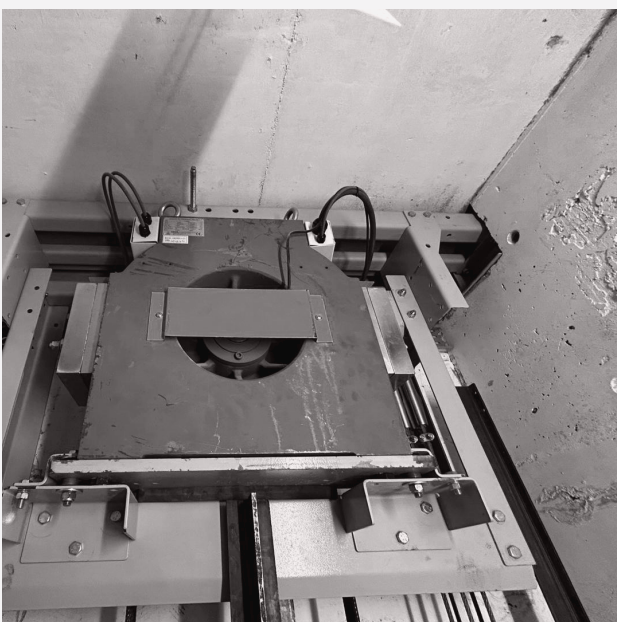
ZIEHL-ABEGG

AUFZUGTEILE 1-25/RR/1200/G150

DRUM DRIVES

CUSTOM DESIGN SERVICE

Modernisations made easy



Bottom Drive Modernisation

Controller and Machine replacement.

Project summary:



300kg.



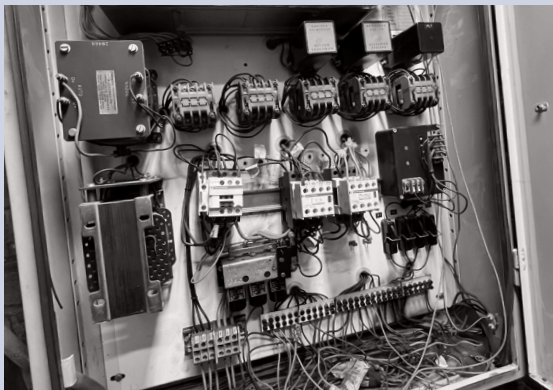
5 Floors.



New geared machine
with UCM



Improved safety



Other Case Studies

Before and After

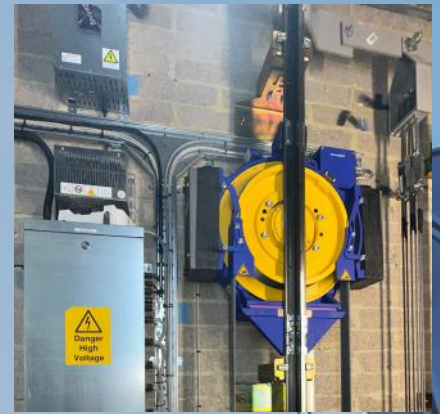
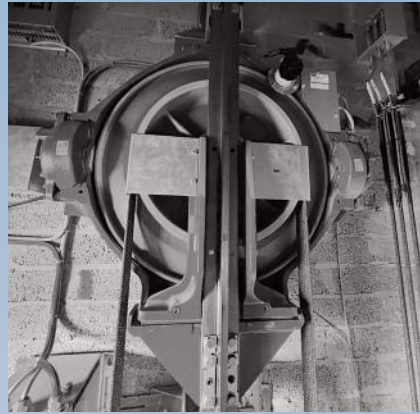


630kg.



7 Floors.

Kone Monospace modernisation including RegenMaster regenerative drive. AMD door operator and controller included.



Before and After

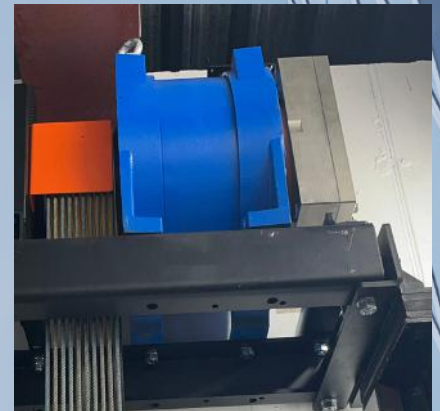


1275kg.



2 Floors.

Aufzugsteile BT MRL modernisation for Irish Rail. Fermator Premium doors and Cobianchi safety gear also included.



Before and After

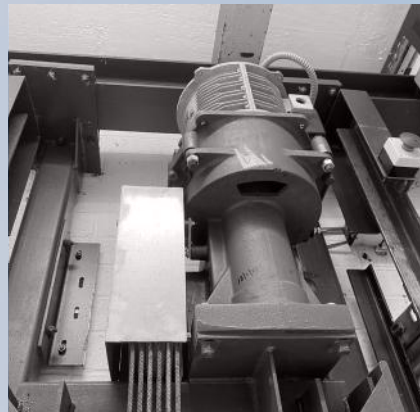


630kg.



2 Floors.

ORONA O-140 MRL modernisation for Irish Rail. Wittur Pegasus Supra doors and Pfeifer Drako ropes also included.



Major Modernisation

Before and After

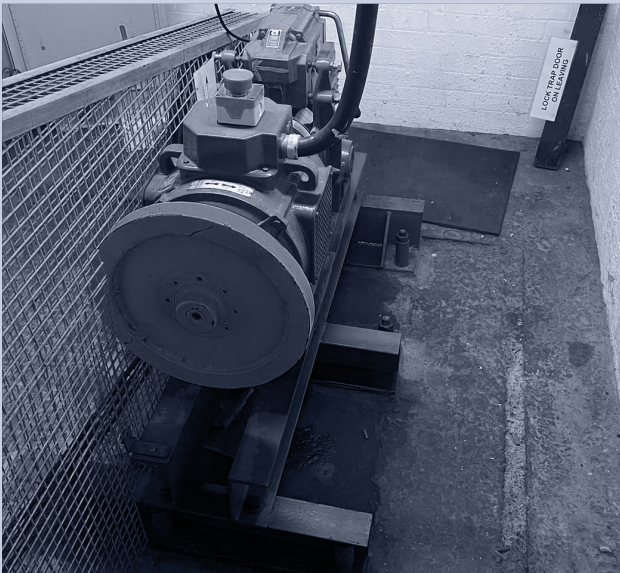
**ARKEL**

300kg.



5 Floors.

Major modernisation of 6 x bottom drive traction lifts with IoT remote monitoring. DSW Solutions was instructed to supply doors, machines, bedplates, controllers, safety gears, autodiallers, overspeed governors, door locks and ropes.



Schindler Smart

Before and After

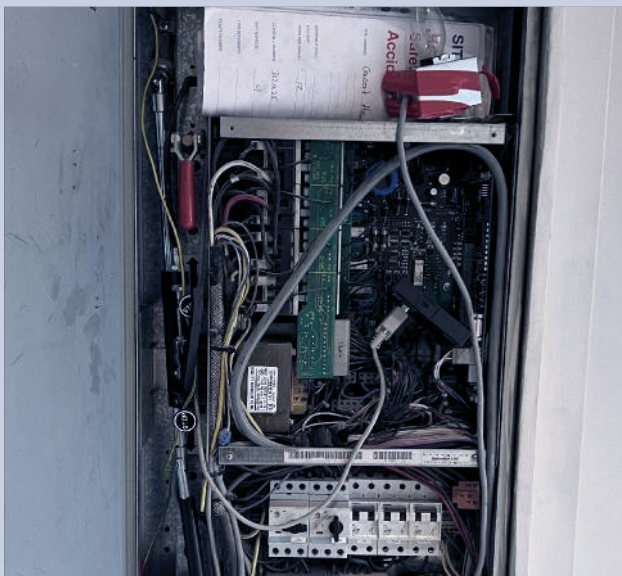
**ARKEL**

630kg.



5 Floors.

Schindler Smart modernisation with IoT remote monitoring. DSW Solutions provided a new VF door operator, gearless machine with UCM compliance, bedplate adaption, Arkel Controller, landing door overhaul kit, overspeed governor and ropes.



DSW

SOLUTIONS

UPLIFTING ELEVATOR
BUSINESSES GLOBALLY

ENERGY SAVING DEVICES
ADVANCED UPS SYSTEMS
EVACUATION/FIREFIGHTING POWER SUPPLIES
ENERGY MONITORING DEVICES
REMOTE MONITORING
DOOR MODERNISATIONS
COMPLETE ENTRANCES
GEARED & GEARLESS MACHINES
CONTROLLER UPGRADES
SPARE PARTS
MAGIC MIRRORS
ACCESS SOLUTIONS
BACK TO GUIDE MODERNISATIONS

WWW.DSW-SOLUTIONS.COM